
RAGSTONE MODELS

www.ragstonemodels.co.uk
Email: info@ragstonemodels.co.uk

Great Eastern Wagon Kit

Wisbech and Upwell Van No 9



Version no: 2.1

26 Wadham Close
Rowley Regis
West Midlands
B65 9SH

Wisbech and Upwell Luggage Van No 9

History

This van was built in 1884 to provide luggage accommodation on the Wisbech and Upwell tramway, running in passenger trains with the tramway coaches available from D&S Models. When a 'normal' brake 3rd was allocated to the line in 1903, the luggage van was not required and transferred to the Stoke Ferry Branch. It was later used on the Elsenham and Thaxted line prior to transfer to service stock on 28 December 1929. In later years it was used to store seating materials at Stratford works.

Numbers

W&U no 9 Tare 4-2-3

Internal user – Number unconfirmed

Livery

1884-1923 (and later)

Brown with gold/yellow shaded red lettering and black below solebar level

1923-38

Brown with gold/yellow shaded red lettering and black below solebar level

When last seen at Stratford works around 1948 it was painted all over white

Further Information

Wisbech and Upwell tramway centenary album p38

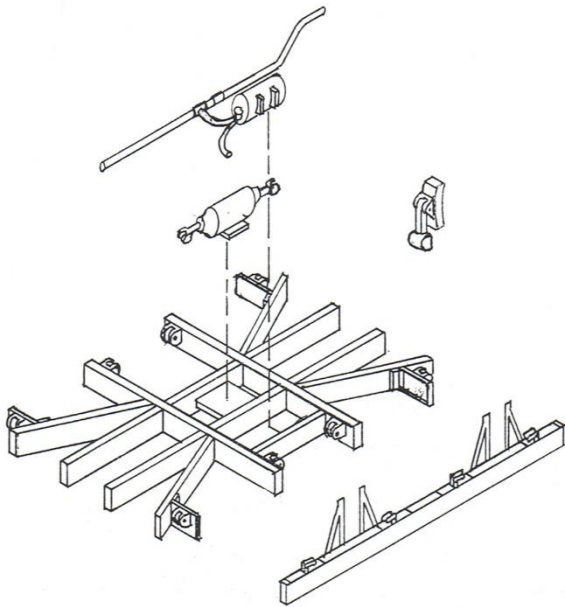
General

Clean any flash or moulding pips from the castings and burnish using a brass brush – available in packs of three from Poundland etc – to clean castings prior to soldering or gluing. It is a good idea to drill any holes at this stage too.

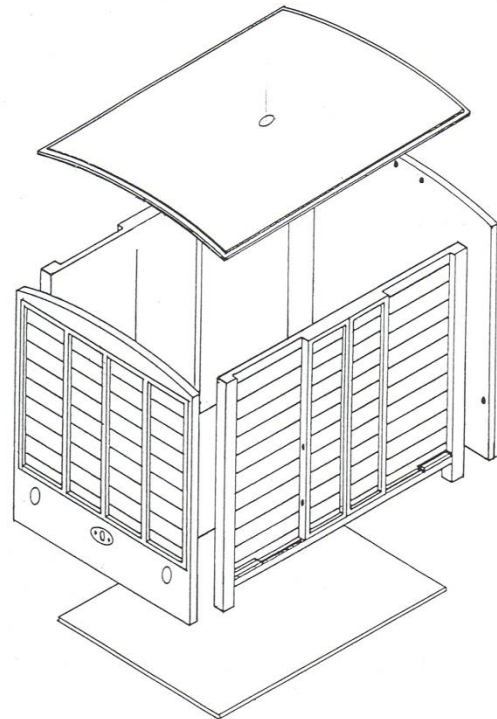
Assembly

1. Assemble the solebars to the underframe; checking all is square and level. Fit air cylinder and reservoir. Pipe work can be added from wire if required. Cut floor to the same size as this assembly and cut 6 1 x 1 mm notches in it to clear locating pegs on the sides. Fix floor to underframe
2. Ensure all axleboxes are a sliding fit to allow slight 'compensation' and assemble with your chosen wheels. The keep plates can be left unfixd to allow the wheels to be removed for painting
3. Fit brake hangers to the underframe with yokes and levers. The long yokes should be left free until painting is complete
4. Clean and paint chassis black. Put to one side to dry
5. Drill 0.75 mm holes in sides and one end for handrails. Assemble sides and ends, ensuring the underframe/solebars fit between the sides and locate on the pips on the inside of the sides
6. The roof should be trimmed to give 1 mm overhang all round and fixed to body. The thinner roof overlay should be trimmed to 1 mm less than the main roof and then fitted. Fit lamp to centre of the roof
7. Fit buffers to buffer beams. Drill all the way through 1.4 mm and 2.0 mm, approx 7 mm deep as required for springing to function. Fit buffer heads with springs and nuts
8. Fit couplings, end steps (to the end with holes drilled in), handrails and air pipes
9. Clean and paint van. Final assembly of body and chassis can be done after painting is complete

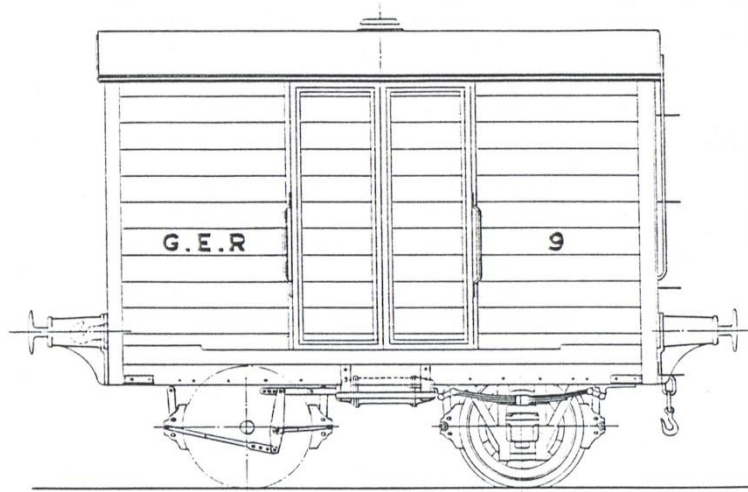
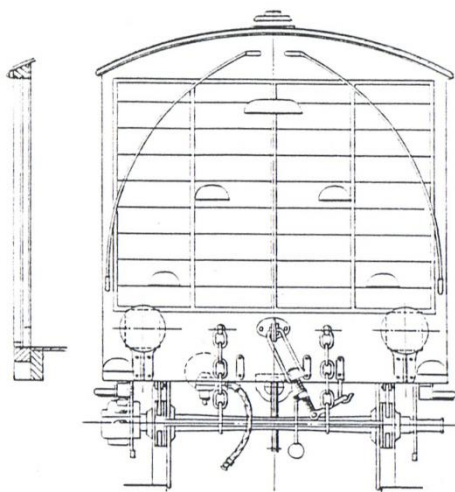
Assembly diagrams:



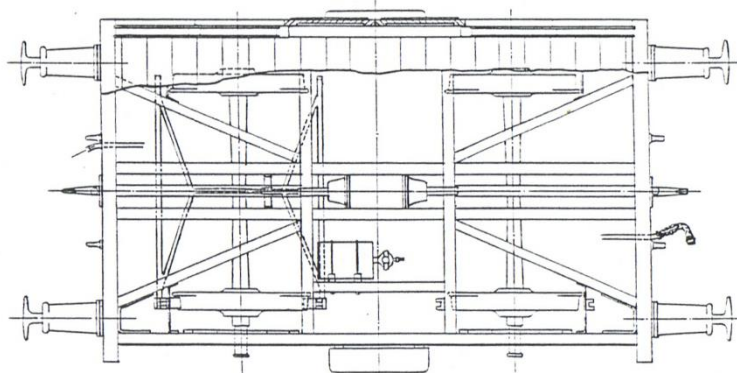
Underframe



Body



C.E.R.
LUGGAGE VAN-WISBECH TRAMWAY
 LENGTH OVER BODY - 12'-0"
 WIDTH OVER BODY - 7'-7"
 WHEEL BASE - 6'-0"
 WHEELS - 2'-8½" DIA.
 BUILT STRATFORD 1884.



General arrangement

Parts List

Castings

Whitemetal

2x	WK101	Side
2x	WK102	End
1x	WK103	Lamp top
1x	WK104	Underframe
2x	WK105	Solebar
4x	WK106	Axlebox
4x	WK107	Keep
4x	WK108	Buffer
4x	WK111	Brake shoe Left
4x	WK112	Brake shoe Right
2x	WK113	Yoke - large
2x	WK114	Yoke - Small
1x	WK115	Air reservoir
1x	WK116	Air cylinder
2x	WK117	Lever
4x	WK118	End steps
1x	WK118	Top end step

Lost Wax Brass

1pr	STA131	Screw couplings
1pr	STA122	Air pipes

Other Parts

4x	STA920	Buffer head
2x	STA930	Coupling springs
4x	STA932	Buffer springs
4x	12BA	Nuts
1x	0.7mm	Wire
2x		Plasticard roof
1x		Plasticard floor

Parts required

2x	2' 8" Mansell Disc wheels (1 pack Slater's 7130 is the closest available)	Paint and transfers for your chosen livery
----	---	--

Note:

This is a scale model intended for responsible (usually adult) modellers only. Whitemetal and many solders contain lead. You should not eat, drink or smoke when assembling this kit and wash your hands after using these products. You should read all instructions on other products (solder flux, paint etc) that are required to complete the kit